



KeyTracer

KEYTAG ASSEMBLING GUIDE

DEVELOPED FOR USE WITH
KEY MANAGEMENT SYSTEMS

To Assemble a Keytag

You will need the following:



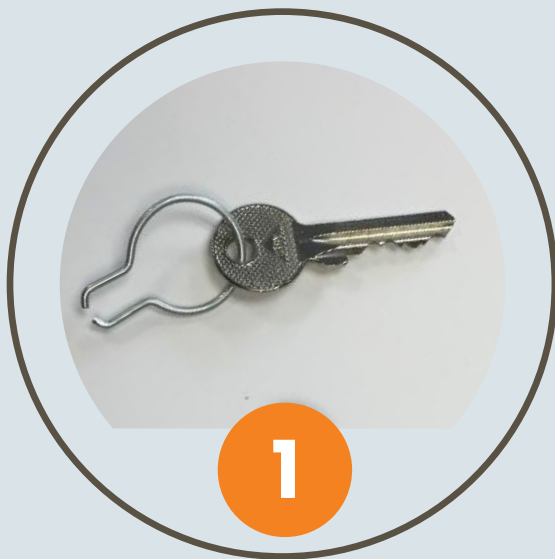
Keytag Ring



Keytag



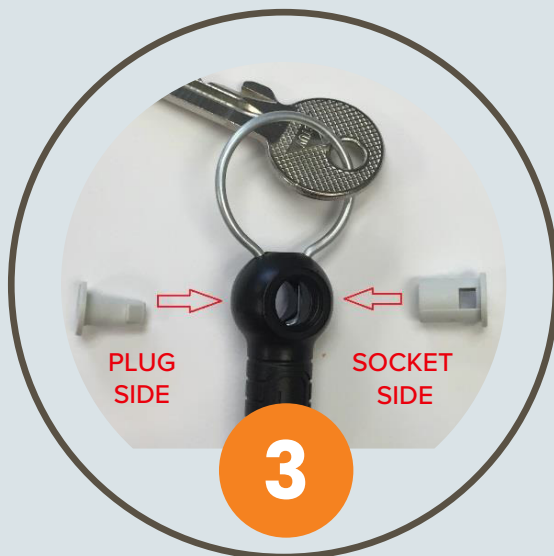
Keytag Seal



Place your key(s) on the Keytag ring



Insert the ring into the keytag



Insert the female seal into the keytag first and then insert the male side to lock in place.



Once the seal is in place it locks the ring onto the keytag.

To Disassemble a Keytag

You will need the de-sealing tool



De-sealing Tool



Place the keytag into the de-sealing tool as shown below, with the logo side of the seal pointing towards the punch and squeeze quickly and firmly. This will remove the seal and the ring can be removed.