

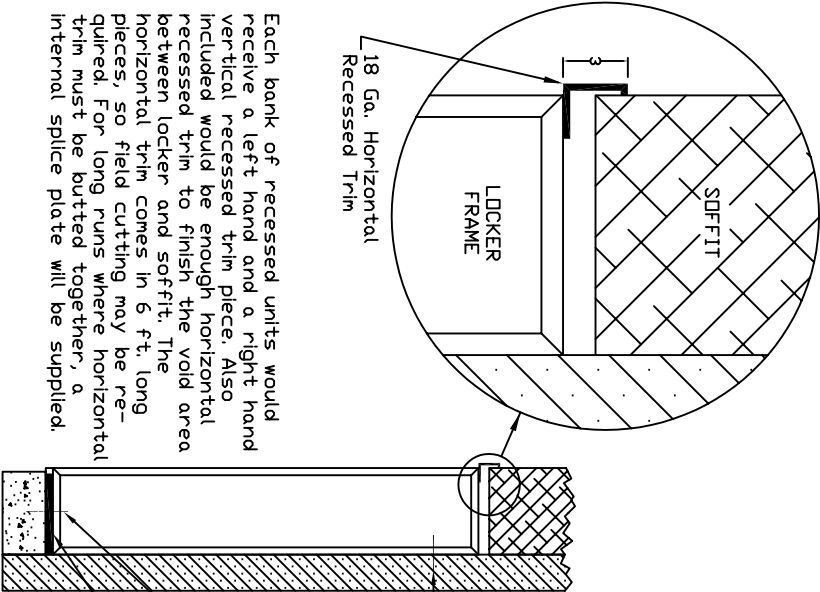
ATHLETIC & CORRIDOR LOCKER INSTALLATION DETAIL If you have any questions, please call DeBourgh at 1-800-328-8829

Placement of Anchors

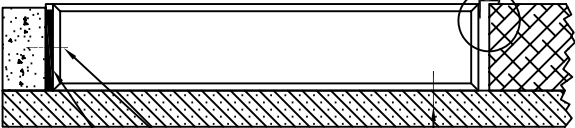
| LOCKER TYPE | LOCKER DEPTH | A | B | C | D |
|--------------|--------------|-----|-----|-----|---------|
| Wall Mount | 12" Deep | 12" | 6" | | 5 1/2" |
| | 16" Deep | 16" | 8" | | 7 1/2" |
| | 18" Deep | 18" | 9" | | 8 1/2" |
| | 22" Deep | 22" | 11" | | 10 1/2" |
| | 24" Deep | 24" | 12" | | 11 1/2" |
| Back To Back | 24" Deep | 12" | 6" | 24" | 5 1/2" |
| | 32" Deep | 16" | 8" | 32" | 7 1/2" |
| | 36" Deep | 18" | 9" | 36" | 8 1/2" |
| | 44" Deep | 22" | 11" | 44" | 10 1/2" |
| | 48" Deep | 24" | 12" | 48" | 11 1/2" |

Fasteners To Be Determined Depending On Wall Conditions By The Installer.

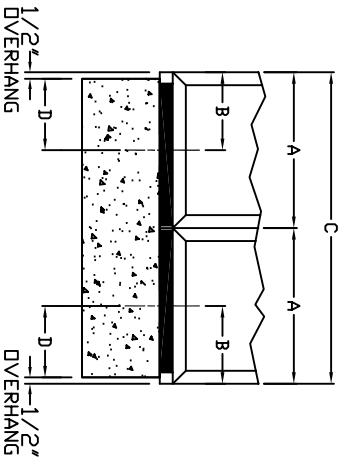
NOTE: Drawings are not drawn to scale. Areas requiring filler are designated by notation. Non-designated areas may not require any filler.



Each bank of recessed units would receive a left hand and a right hand vertical recessed trim piece. Also included would be enough horizontal recessed trim to finish the void area between locker and soffit. The horizontal trim comes in 6 ft. long pieces, so field cutting may be required. For long runs where horizontal trim must be butted together, a internal splice plate will be supplied.



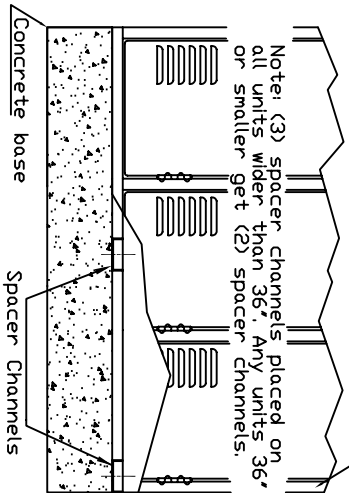
1/4" x 2 1/2" CAD Plated Lag Screws and Washers Furnished By Installer.
 Spacer Channel (Highlighted) Runs From Front To Back.



NOTE: Front of the locker recommended to overhang the front of the base by 1/2".

FRONT CUT SECTION Angle Iron Frame

Note: (3) spacer channels placed on all units wider than 36". Any units 36" or smaller get (2) spacer channels.



All Lockers Must Be Secured To The Wall And Floor Prior To Use.